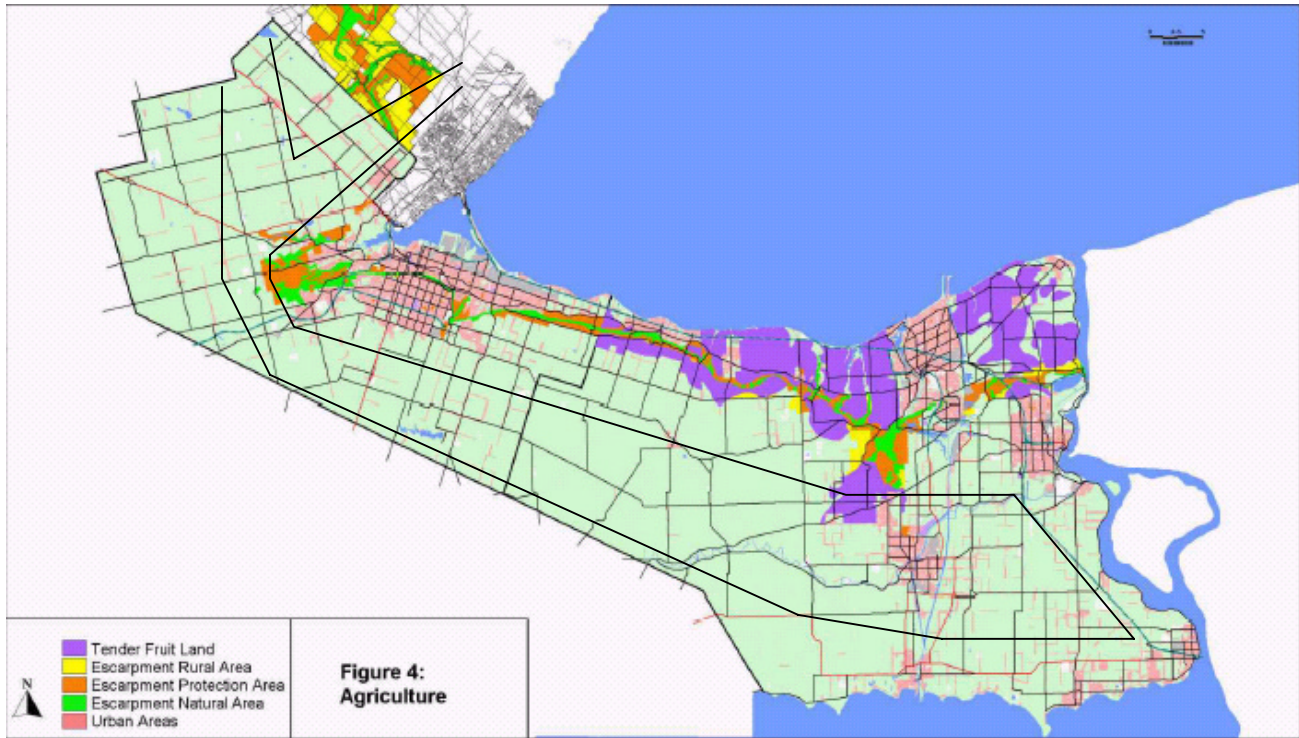


## MTO Graphic on Agriculture from Mid-Pen Highway Needs Assessment Study

**Tender Fruit Land is shown in purple, other types of agriculture are apparently not recognized by MTO.**



MTO Graphic regarding agriculture.<sup>1</sup>

The black lines have been superimposed by COPE and represent the approximate boundary of the highway study corridor. The interesting thing about this document is that it appears to show that MTO considers the Niagara Tender Fruitlands to represent the **only** agricultural activity in the entire Peninsula.

This will no doubt come as a surprise to the operators of the hundreds of family farms along the length of the study corridor that the MPH has the potential to bisect and over-run.

This graphic is another sign of MTO's apparent bias towards considering the needs of the Niagara Region to be of more import than the needs of and effects upon those in the Western, Flamborough, and Burlington areas of the corridor.

<sup>1</sup> MPH Needs Assessment Environmental Report, Figure 4